

SREB

The Courage to Learn

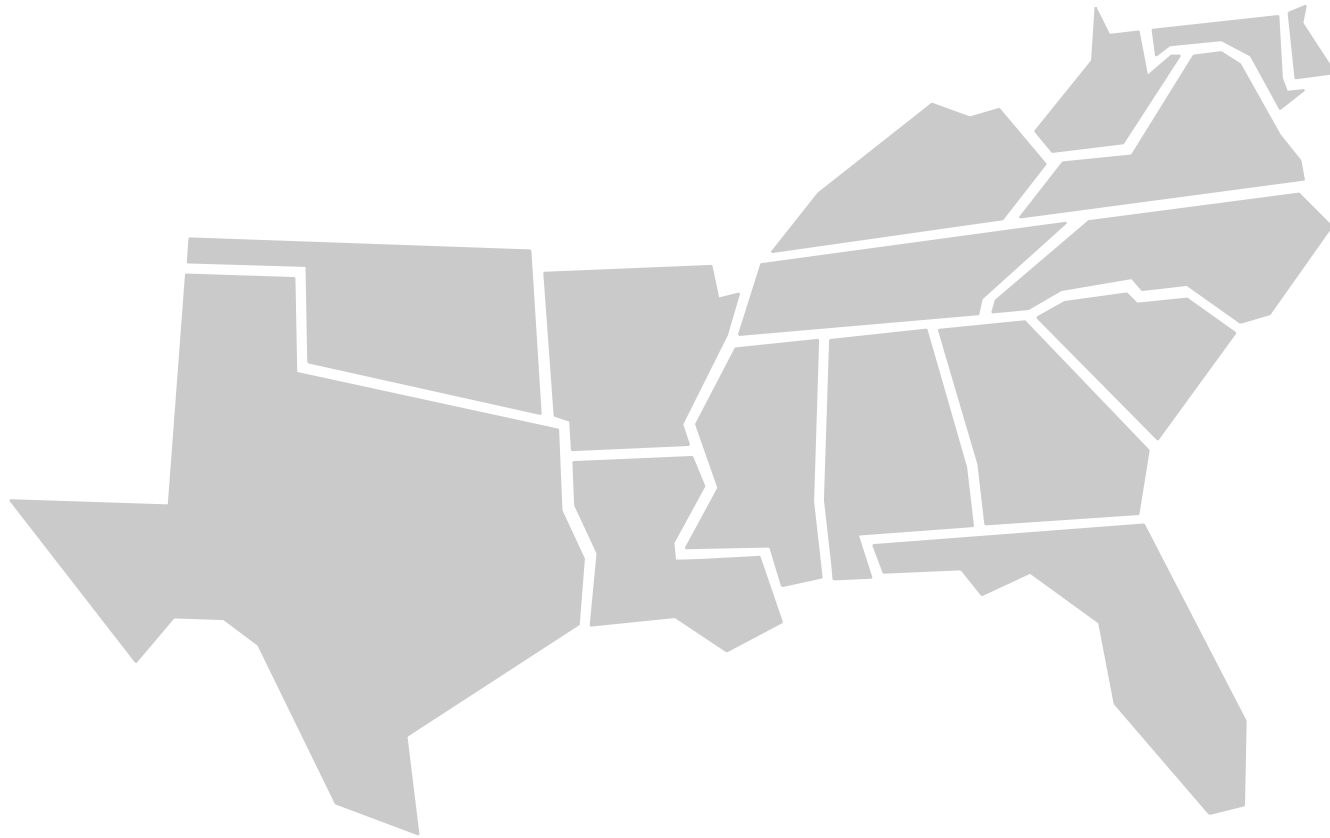
The Challenges and Solutions to COVID in the South

Stephen L. Pruitt, Ph.D.

President

75th
Anniversary

Southern Regional Education Board

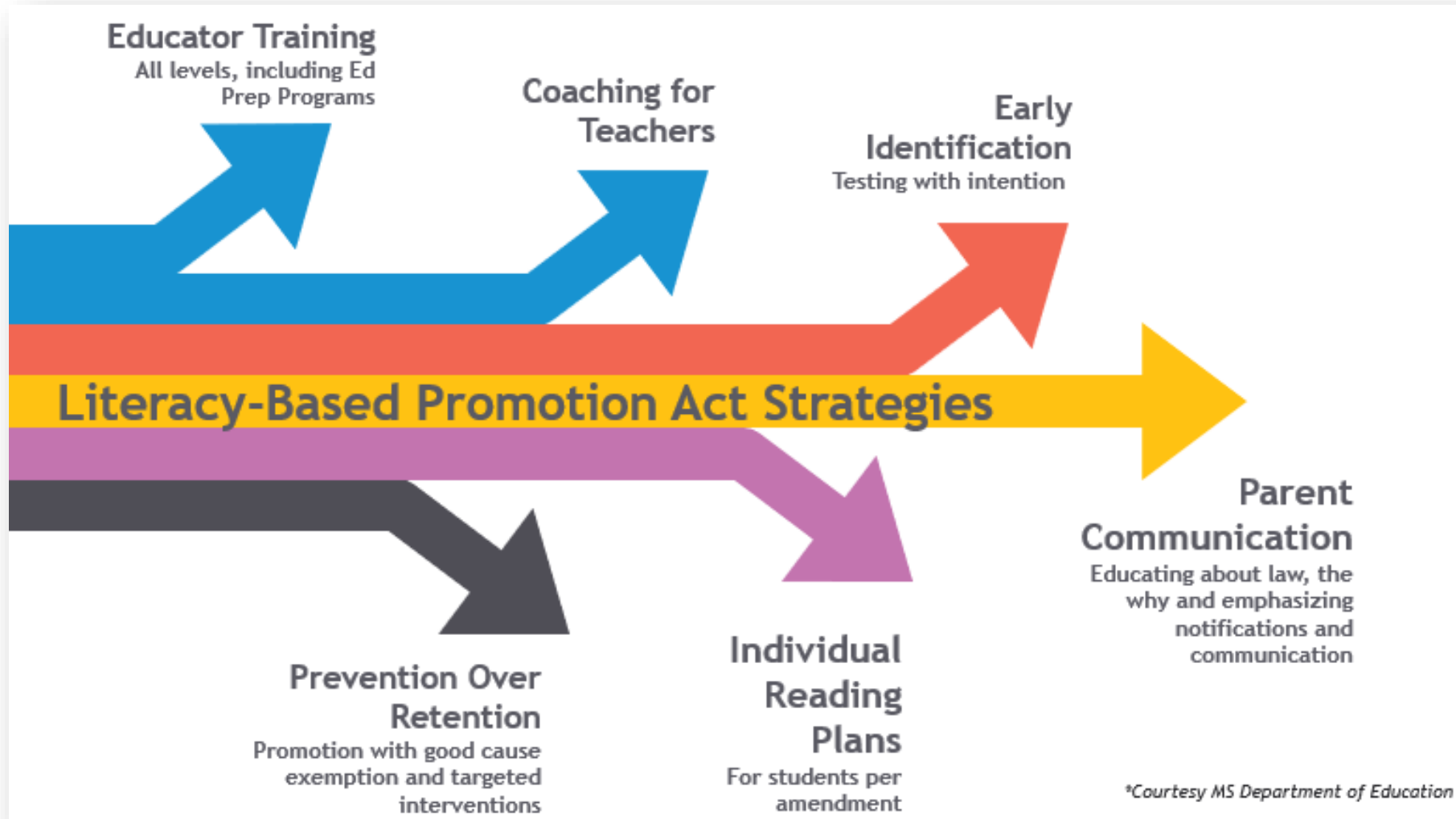


SREB

“The Mississippi Miracle”

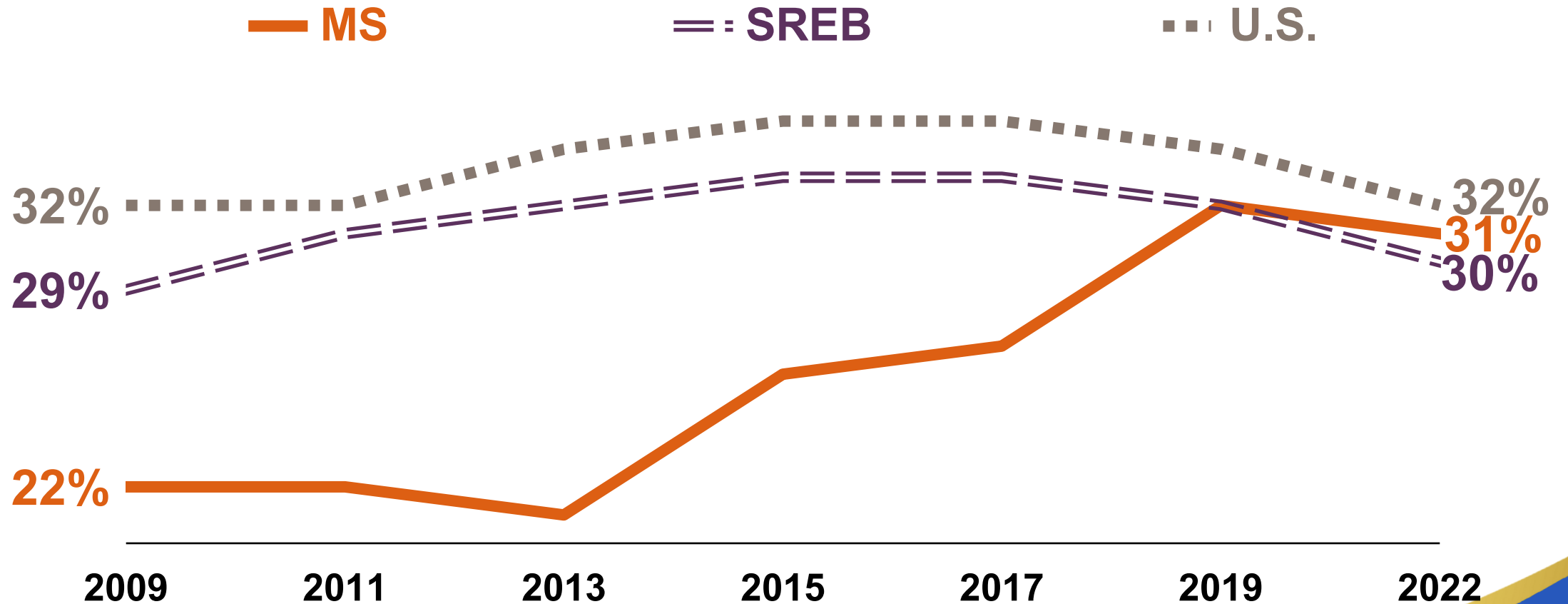
75th
Anniversary

No Magic, No Miracle



4th Grade NAEP Reading

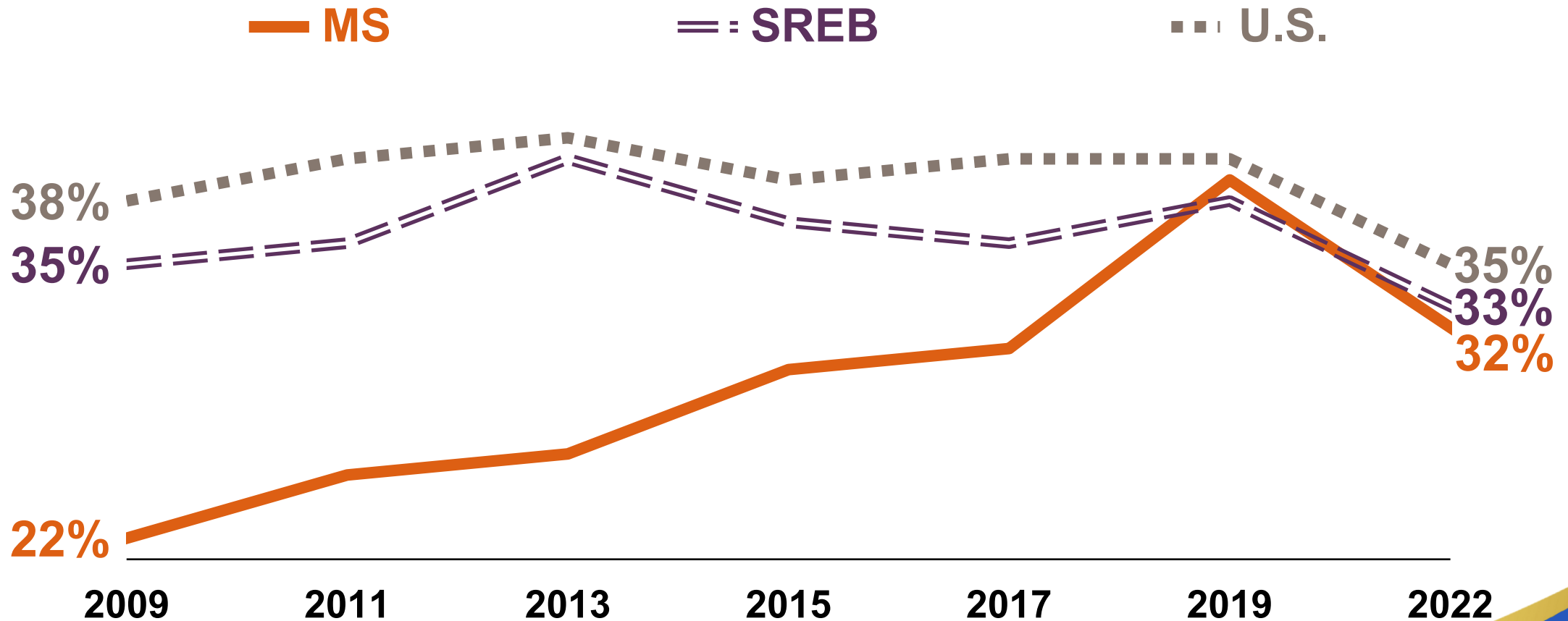
Percentage Scoring At or Above Proficient in Mississippi



Source: National Center for Education Statistics

4th Grade NAEP Math

Percentage Scoring At or Above Proficient in Mississippi



Source: National Center for Education Statistics

Addressing NAEP and COVID

➤ Alabama

- Aligning ESSA, Perkins, and WIOA
- Building a data system allowing sharing among agencies
- FASFA Completion

➤ Tennessee

- Large investments in summer and in-school tutoring
- From 2009-2015, the proportion of Black students scoring at or above NAEP Proficient increased by 13 percent

➤ Texas

- Large investments in summer school and tutoring

SREB

Education Economics

Why NAEP Matters and the Courage to Act

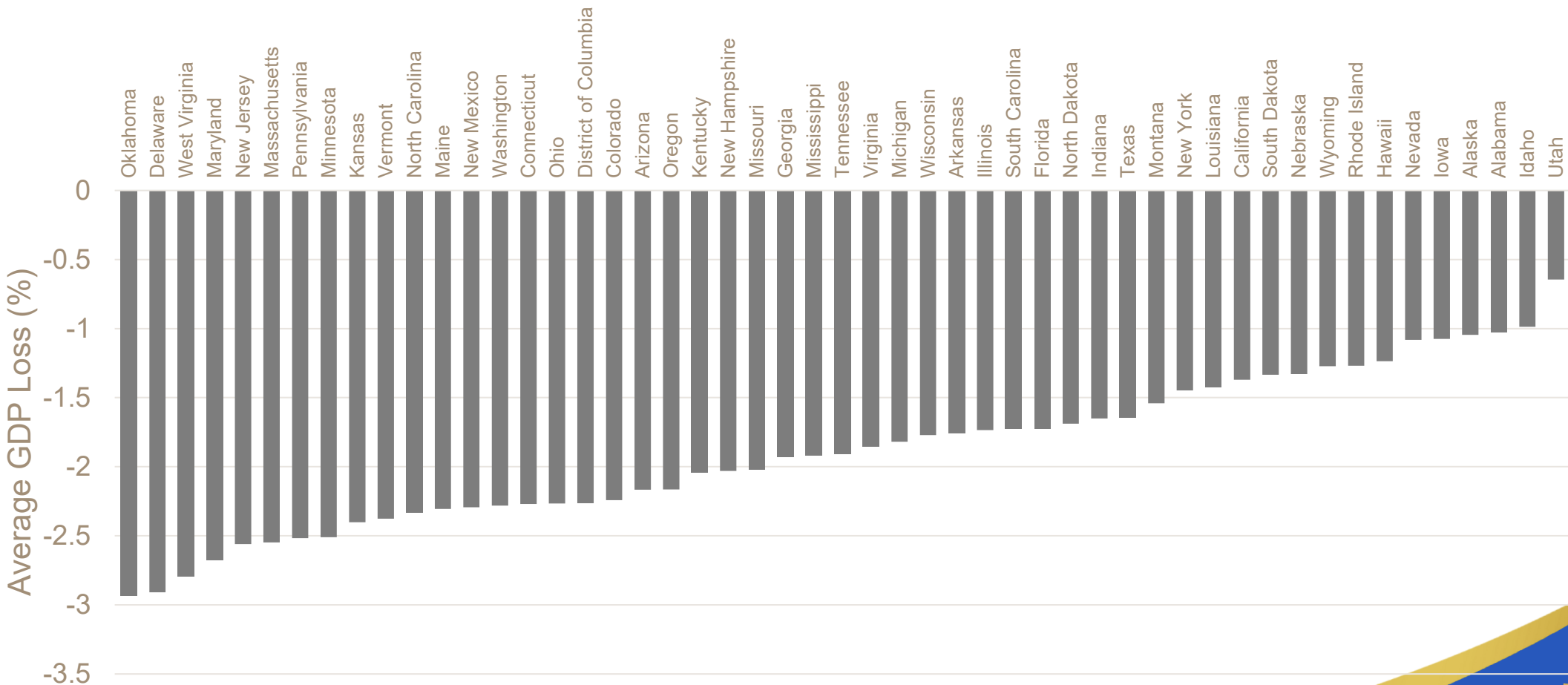
75th
Anniversary

COVID Economic Impacts

- 6% Lifetime “COVID Tax”
- Potential National Loss of \$28 trillion

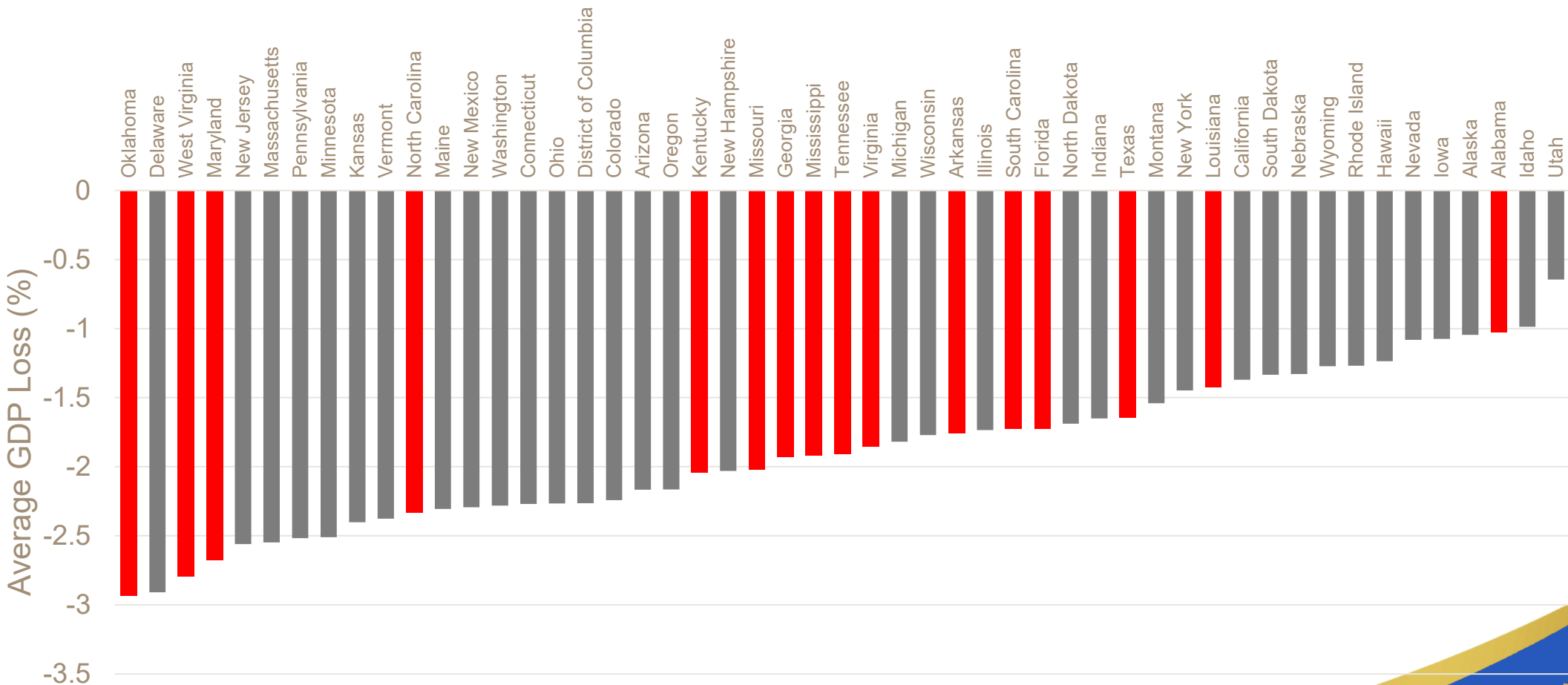
(Eric A. Hanushek, Stanford University)

Potential GDP Impact of COVID-Cohort



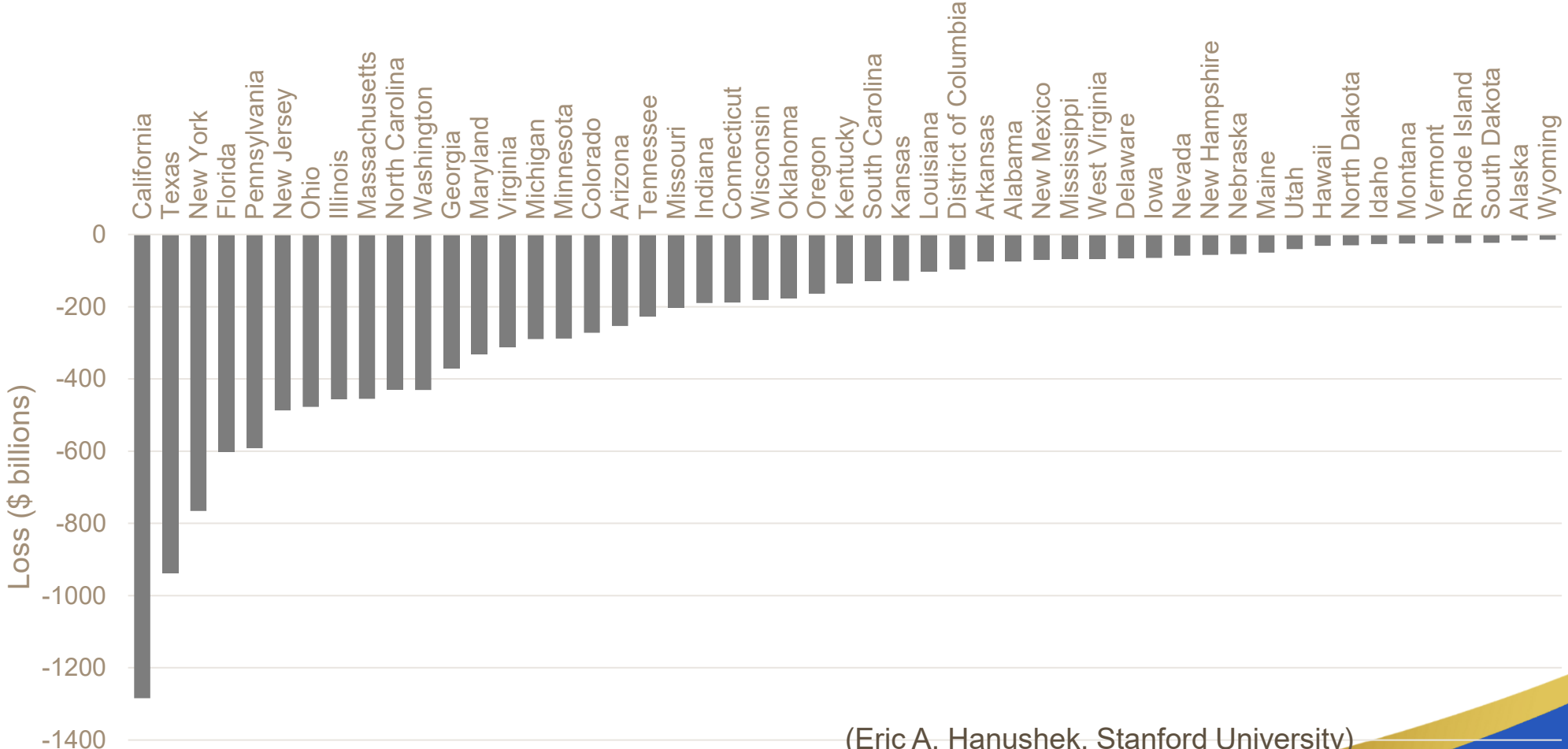
(Eric A. Hanushek, Stanford University)

Potential GDP Impact of COVID-Cohort



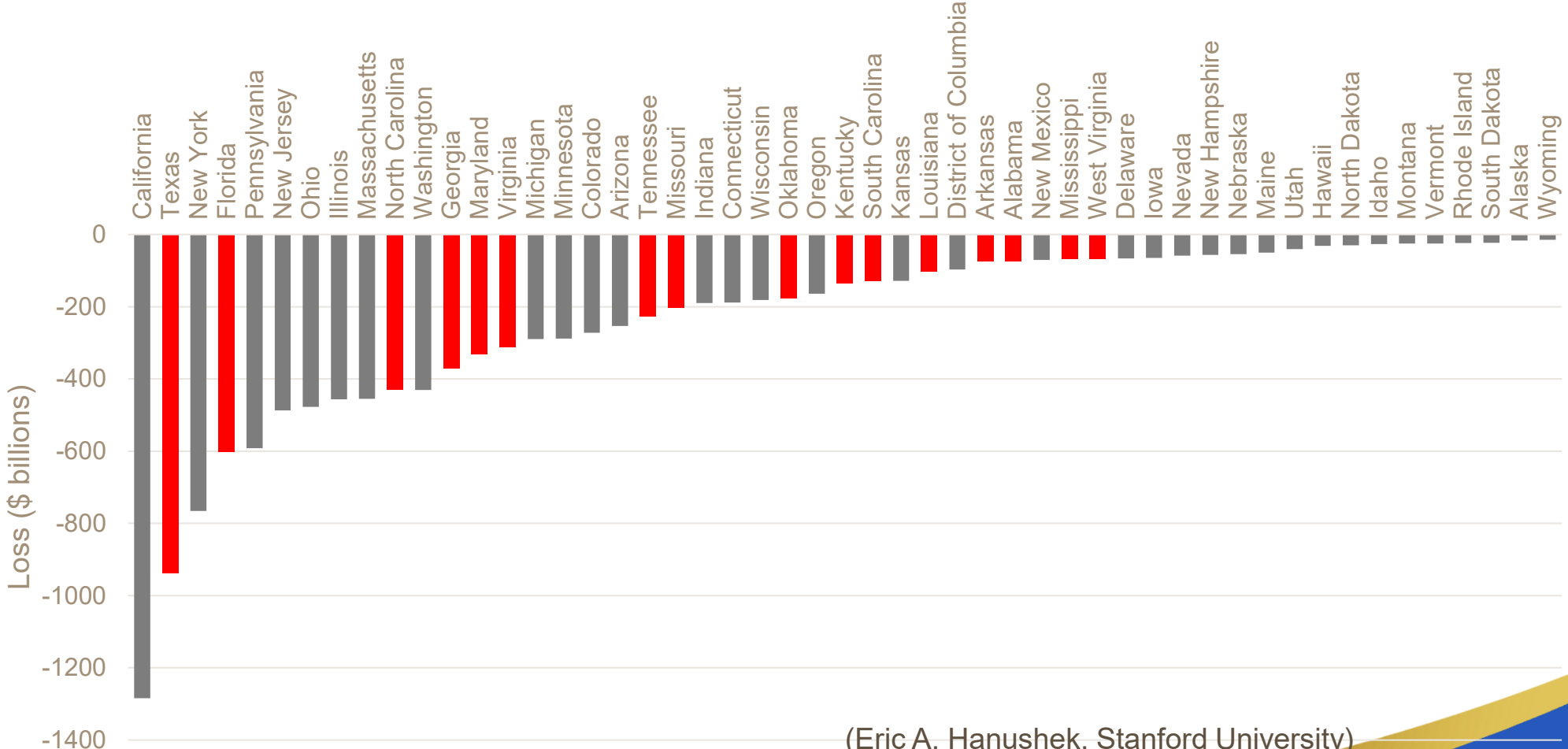
(Eric A. Hanushek, Stanford University)

Potential Economic Impact of COVID-Cohort



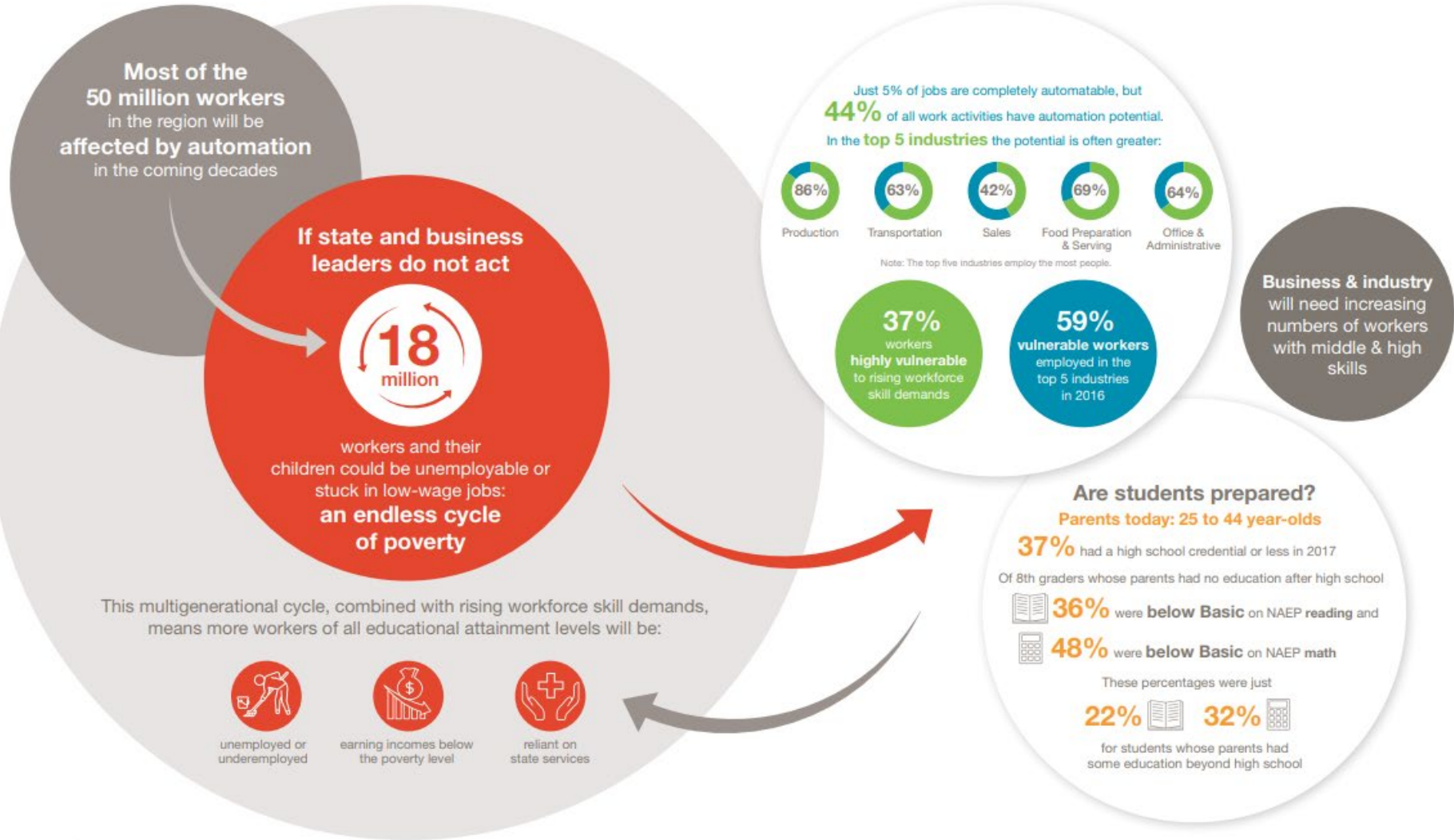
(Eric A. Hanushek, Stanford University)

Potential Economic Impact of COVID-Cohort



(Eric A. Hanushek, Stanford University)

The SREB Region's Economic Outlook



SREB

75th
Anniversary

SREB

75th
Anniversary

A Few Final Thoughts

- Set ambitious goals for improvement at state using NAEP
- Focus on instruction
- Have the courage to embrace NAEP results
- Do not look for silver bullets
- Evaluate levels of funding and other elements that are required to reach your goals
- Seek solutions and constantly assess progress
- Have the courage to change direction when the data indicates
- Do not ignore other areas to just focus on literacy; other areas support literacy performance

SREB

Contact me:

Stephen L. Pruitt, Ph.D.

President

Stephen.Pruitt@SREB.org

Twitter: @DrSPruitt

www.sreb.org

Southern
Regional
Education
Board

SREB.org

75th
Anniversary